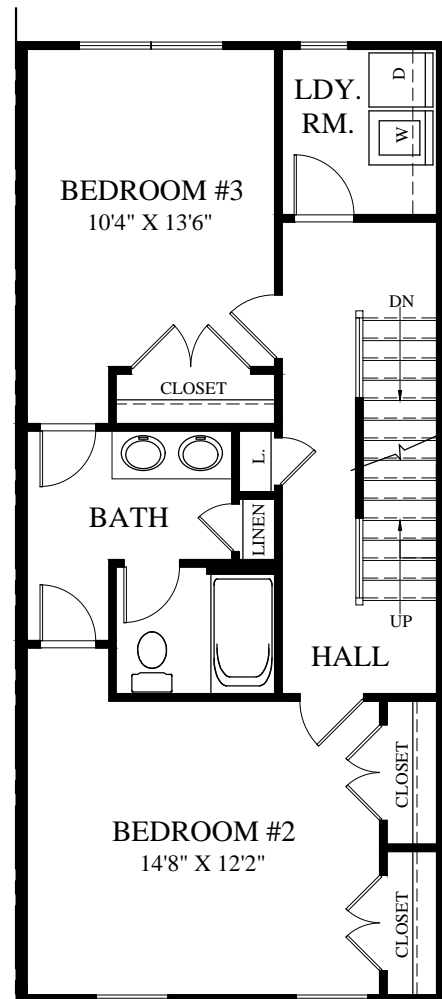


FOURTH LEVEL



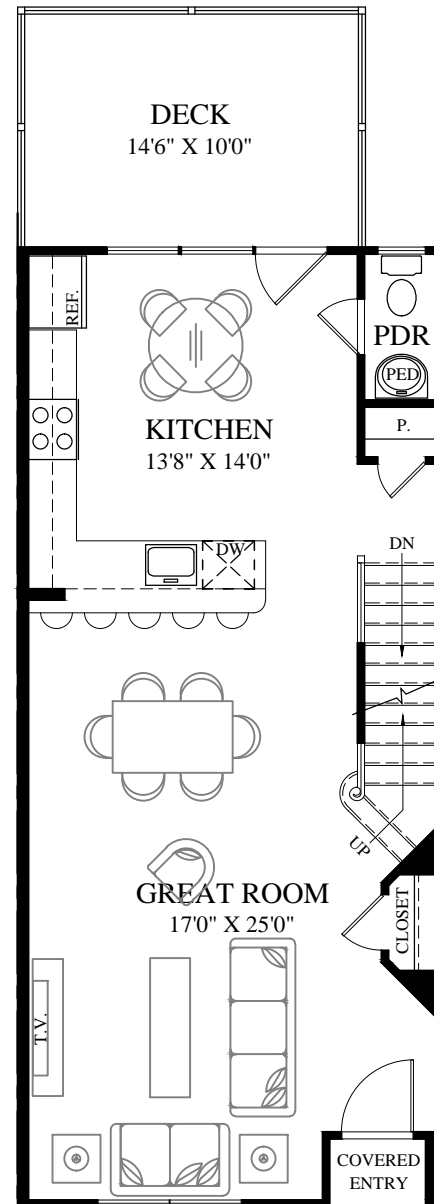
PART'L AT OPTIONAL BAY



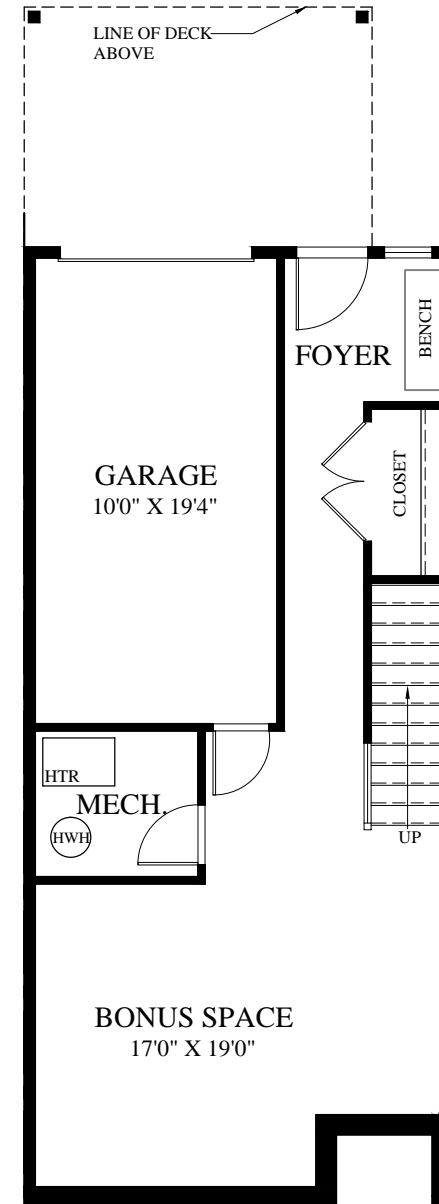
THIRD LEVEL



PART'L AT OPTIONAL BAY



SECOND LEVEL



FIRST LEVEL

SQUARE FOOTAGE	
FIRST LEVEL:	495 S.F.
SECOND LEVEL:	706 S.F.
THIRD LEVEL:	720 S.F.
FOURTH LEVEL:	535 S.F.
TOTAL:	2456 S.F.
GARAGE:	210 S.F.
OPT. BAY:	+11 S.F.

JND GROUP, LLC  
515 GWYNEDD AVE  
BLUE BELL, PA 19442

THE ARCHITECTURAL PLANS AND ELEVATIONS ARE ARCHITECTURAL CONCEPTS. DETAILS AND DIMENSIONS SHOWN MAY VARY FROM FINAL ARCHITECTS PLANS AND BUILDER FIELD CHANGES.

COPYRIGHT BY LUCE ARCHITECTS, 2013. ALL RIGHTS RESERVED. NO ALTERATIONS, REPRODUCTIONS OR USE OF ANY PART OF CONTENTS MAY BE MADE WITHOUT THE EXPRESSED WRITTEN PERMISSION OF THE AUTHOR

*East Hector Street*  
Conshohocken Borough, Montgomery County, PA



Christopher J. Luce, AIA  
PA RA015179  
NJ 21A101673300  
67 Byberry Road, Hatboro, PA. 19040  
Phone: 215-674-5950 \* Fax: 215-674-5952  
WWW.LUCEARCHITECTS.COM  
7/22/13 (REV: 8/6/13) 271301